



A completamento dei prodotti presentati nel catalogo, indichiamo di seguito alcuni accessori:

- calotta o pipette coprimorsetti per una valida protezione contro contatti accidentali con i morsetti
- mascherine per la chiusura di forature e cornici per montaggio ad incasso
- sportelli sigillabili per protezioni IP65 e guarnizioni
- sistemi di fissaggio

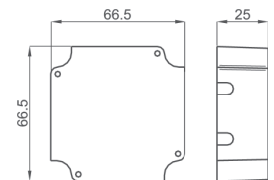
Here below are listed some accessories to complete the products in the catalogue:

- plastic terminals cover or rubber terminals cover for protection against accidental contacts
- panel cutout covers and frame
- sealable front covers with IP65 protection degree and rubber gaskets
- fixing systems

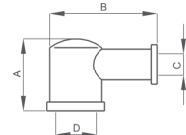
TIPO - Type

DIMENSIONI - Dimensions

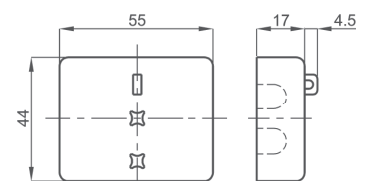
Coprimorsetti - Terminal cover		Codice - Code
Coprimorsetto di protezione per indicatori analogici (di serie su F72... F96... F14...) <i>Protection terminal covers for analog meters (standard for F72... F96... F14...)</i>		<b>9SBMCST</b>
Pipetta in gomma coprimorsetto <i>Rubber terminal covers</i>		<b>9SAMPP</b>
Pipetta in gomma coprimorsetto - Tipo grande (per ingressi 20÷100A) <i>Rubber terminal covers - Large size (for input 20÷100A)</i>		<b>9SAMP</b>
Coprimorsetto per TA <i>CTs terminals cover</i>	TAC003; TAC005; TAC008; TAC010; TAC020; TAC017; TAC071; TAC021; TAC022; TAC032; TAC033; TAC040; TAC050; TAC051; TAC053; TAT061; TAT063; TAT060; TAT081; TAT082; TAT101; TAT127	<b>9SBMCTA</b>
	TAT050; TAT090; TAT128; TAT129; TAT165; TAT225; TAR	<b>9SBMCTA50</b>
	TAT084; TAT126	<b>9SBMCTA84</b>
	TAT125; TAT064; TAT079; TAT085; TAT106	<b>9SBMCTA125</b>
	TAT050...UL; TAT063...UL; TAT081...UL; TAT127...UL	<b>9SBMCTAUL</b>
Coprimorsetti sigillabile per TA <i>CTs sealable terminals cover</i>	TAC003; TAC005; TAC008; TAC010; TAC020; TAC017; TAC071; TAC021; TAC022; TAC032; TAC033; TAC040; TAC050; TAC051; TAC053; TAT061; TAT063; TAT060; TAT081; TAT082; TAT101; TAT127	<b>9SBMCTA</b>
	TAT050; TAT090; TAT128; TAT129; TAT165; TAT225; TAR	<b>9SBMCTA50S</b>
	TAT084; TAT126	<b>9SBMCTA84S</b>
	TAT125; TAT064; TAT079; TAT085; TAT106	<b>9SBMCTA125S</b>
Coprimorsetto per TV <i>VTs terminals cover</i>	TTV007; TTV010; TTV020; TTV050; TTV100	<b>9SBMCTV</b>
Coprimorsetti sigillabile TV <i>VTs sealable terminals cover</i>	TTV007; TTV010; TTV020; TTV050; TTV100	<b>9SBMCTVS</b>



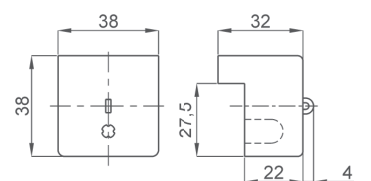
**9SBMCST**



Code	A	B	C	D
9SAMPP	13	36	6,5	11
9SAMP	26	38	7,5	14



**9SBMCTA - 9SBMCTAS**  
**9SBMCTA50 - 9SBMCTA50S**  
**9SBMCTAUL**  
**9SBMCTA84 - 9SBMCTA84S** (2 pezzi/pieces)  
**9SBMCTV - 9SBMCTVS** (2 pezzi/pieces)

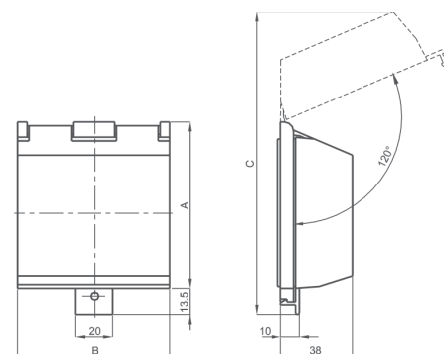


**9SBMCTA125 - 9SBMCTA125S**

## TIPO - Type

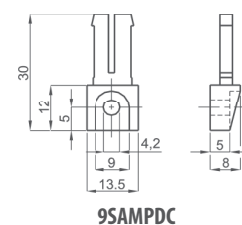
## DIMENSIONI - Dimensions

Protezioni - Protections		Codice - Code
Sportelli sigillabili con protezione IP65 <i>Sealable front doors with protection degree IP65</i>	72 x 72	<b>9SFCC72SP</b>
	96 x 96	<b>9SFCC96SP</b>
	96 x 48	<b>9SFCC98SP</b>
Guarnizioni di protezione <i>Protection rubber gaskets</i>	48 x 48	<b>9ZSGP48</b>
	72 x 72	<b>9ZSGP72</b>
	96 x 96	<b>9ZSGP96</b>
	144 x 144	<b>9ZSGP14</b>
	96 x 48	<b>9ZSGP98</b>

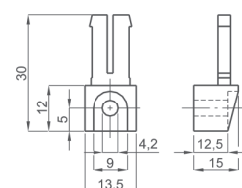


Code	A	B	C
9SFCC72SP	88	80	140
9SFCC96SP	112	103	180
9SFCC98SP	112	56	180

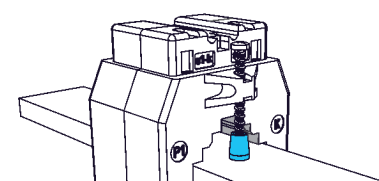
Sistemi di fissaggio - Fixing systems		Codice - Code
Piedini di fissaggio tipo basso <i>Low-type fixing feet</i>	convertitori/transducer; TAT061; TAT063; TAT064; TAT060; TAT079; TAT081; TAT082; TAT085; TAT127	<b>9SAMPDC</b>
Piedini di fissaggio tipo-alto <i>High-type fixing feet</i>	TAC010; TAC020; TAC051; TAC053	<b>9SAMPDL</b>
Cappuccio di protezione per fissaggio TA <i>Protective caps for CT fixing</i>		<b>9SAMCP</b>
Accessorio per fissaggio TAT022 <i>TAT022 fixing accessory</i>		<b>VAT022DIN</b>
Cilindro di connessione per montaggio TA nel punto di giunzione <i>tra due sbarre</i> <i>Connection cylinders to install the CT in the junction point of two busbars</i>		<b>9SAMT221039</b>



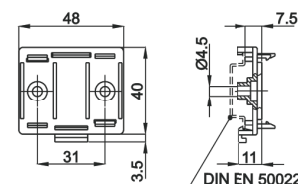
9SAMPDC



9SAMPDL



9SAMCP



VAT022DIN

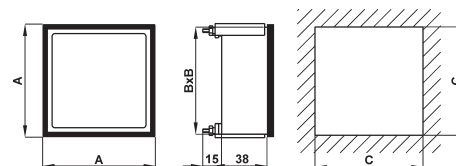


9SAMT221039

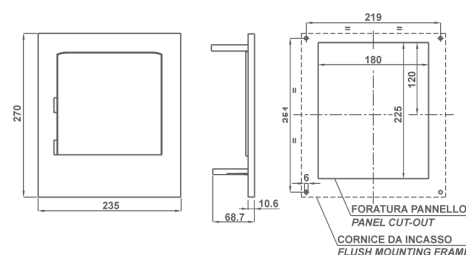
TIPO - Type

DIMENSIONI - Dimensions

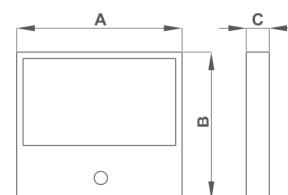
Mascherine e Cornici - Panel cutouts & Frames		Codice - Code
Mascherina di chiusura foro Panel cutout covers	48 x 48	<b>4F48TAP</b>
	72 x 72	<b>4F72TAP</b>
	96 x 96	<b>4F96TAP</b>
	144 x 144	<b>4F14TAP</b>
Cornice per montaggio ad incasso 96x96 indicatori 72x72 Flush mounting 96x96 accessory for 72x72 meters	X72...	<b>4C7296XK</b>
Cornice per montaggio ad incasso 72x72 indicatori modulari 3 mod. DIN Flush mounting 72x72 accessory for modular meters (3 DIN modules)	Q52...	<b>4C5272XK</b>
Cornice per montaggio ad incasso 96x96 indicatori modulari 3 mod. DIN Flush mounting 96x96 accessory for modular meters (3 DIN modules)	Q52...	<b>4C5296XK</b>
Cornice per montaggio ad incasso contatori omologati ENEL Flush mounting frame Kit for Energy meter approved by ENEL	CSEZMD...	<b>4CSEZMDK</b>
Cornice Nera per indicatori analogici da pannello Black frame for rectangular analog indicators	P70...	<b>CP71</b>
	P90...	<b>CP91</b>
Cornice Nera per montaggio a RETRO PANNELLO indicatori analogici Backside panel mounting frame for rectangular analog indicators	P70...	<b>CP76</b>
	P90...	<b>CP96</b>



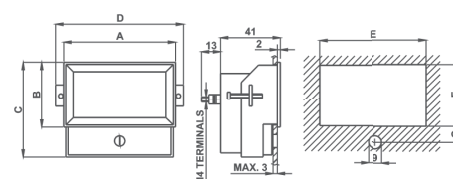
Code	A	B	C
4F48TAP	48	44	45
4F72TAP	72	67	68
4F96TAP	96	91	92
4F14TAP	144	137	138



**4CSEZMDK**



Code	A	B	C
<b>CP71</b>	71	61	12,5
<b>CP91</b>	91	81	12,5



Code	A	B	C	D	E	F	G
<b>CP76</b>	76	45	65,5	87	74	43	11
<b>CP96</b>	96,5	61,5	85,5	107,5	94,5	59,5	11